

# Local Control and Accountability Plan

Carlsbad USD  
2017-18 Highlights  
Page 1 of 2



## DISTRICT STORY



**11,077** TK-12 STUDENTS



**16**  
SCHOOLS



**12**  
DISTINGUISHED  
Schools



**977**  
EMPLOYEES

## SUBGROUPS



**23%**  
Low Income



**8%**  
English Learners



**<1%**  
Foster Youth



**23%**  
Unduplicated High Need

## Core Values

Integrity, Excellence,  
Respect, & Accountability



## Graduate Profiles

Preparing all students for  
life beyond high school

## District Mission:

We provide every student an  
extraordinary education in an  
inspiring environment



## BUDGET

General Fund Expenditures:

**\$107,309,048**

General Fund expenditures  
are broken down into the  
following categories:

**Salaries: 49%**

**Benefits: 23%**

**Services: 10%**

**Books: 4%**

**Other: 1%**

LCAP Expenditures:

**\$20,281,487**

Specified LCAP expenditures make up **19%** of General Fund expenditures.

## GOAL

**#1**

INVESTING  
**\$2,237,462**



**Standards-based  
Learning in Safe Schools**

## HIGHLIGHTED OUTCOMES & METRICS



MAINTAIN POSITIVE  
PROFESSIONAL DEVELOPMENT  
SURVEY RESPONSES

**= 90%+**



INCREASE PROFESSIONAL  
DEVELOPMENT PATHWAY  
DIGITAL BADGES

**↑ 2** Pathways



IMPROVE FACILITY  
WORK ORDER COMPLETION

**+ 5%**



DEVELOP & IMPLEMENT  
FACILITY MASTER PLAN

**↑**



INCREASE SCHOOL  
CLEANLINESS SURVEY  
POSITIVE RATINGS

**+ 2%**

## HIGHLIGHTED ACTIONS, EXPENDITURES & TARGETS

1.1 - District initiative aligned PD & collaboration	<b>\$174,400</b>	EL LI FY
1.2 - Differentiated instructional strategies training & professional development	<b>\$43,600</b>	All Students
1.3 - Identify, prioritize, & purchase instructional materials	<b>\$1,435,000</b>	EL LI FY
1.4 - Identify & prioritize unduplicated student needs & purchase instructional materials	<b>\$358,800</b>	EL LI FY
1.5 - Inventory, track, & upgrade technology hardware & software	<b>\$365,000</b>	EL LI FY
1.6 - Create & implement technology use professional development pathways	<b>\$332,349</b>	EL LI FY
1.7 - Targeted intervention strategies for unduplicated students PD	<b>\$83,087</b>	EL LI FY
1.8 - College & career readiness & 4-year plan PD for counselors	<b>\$32,000</b>	EL LI FY



# Local Control and Accountability Plan

Carlsbad USD  
2017-18 Highlights  
Page 2 of 2



## GOAL #2 INVESTING \$17,327,450



### College / Career Readiness

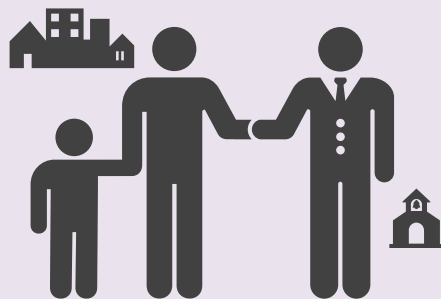
#### HIGHLIGHTED OUTCOMES & METRICS

	INCREASE # OF GRADUATES COMPLETING A-G REQUIREMENTS	+ 5%
	INCREASE HS STUDENTS IN HONORS, AP OR COMMUNITY COLLEGE CLASSES	↑ 63%
	INCREASE STUDENTS SBAC MET/EXCEEDED STATUS	+ 3%
	INCREASE CELDT PROFICIENCY SCORES, <5 YRS & >5 YRS	+ 2%
	MAINTAIN OR INCREASE EL RECLASSIFICATION RATE	=/↑ 12%

#### HIGHLIGHTED ACTIONS, EXPENDITURES & TARGETS

2.1 - Ensure uniform implementation through professional learning	\$318,169	All Students
2.2 - RTI staff support & training	\$78,034	EL
2.3 - Implement academic interventions for students in need of support & subgroup students	\$148,000	LI FY
2.4 - Continue ELD Specialist model for ELA/ELD aligned support	\$432,788	
2.5 - Decrease class size to enhance pupil outcomes	\$2,422,819	All Students
2.6 - Decrease unduplicated student class size to enhance outcomes	\$605,705	EL LI FY
2.7 - Provide additional site budget autonomy for academic/intervention plans	\$97,080	
2.8 - Provide targeted special education supports	\$11,400,000	SWD
2.9 - Targeted special education supports for unduplicated students	\$600,000	EL LI FY

## GOAL #3 INVESTING \$307,765



### Engaged School & Community

#### HIGHLIGHTED OUTCOMES & METRICS

	MAINTAIN PARENT UNIVERSITY WORKSHOP PARTICIPATION	= 786+
	INCREASE MEASURES OF STUDENT CONNECTEDNESS ON CHKS	+ 1%
	MEASURE GRADES 9 & 11 DRUG & ALCOHOL RESPONDENT RATES ON CHKS	- 1%
	INCREASE STUDENTS SCORING IN THE HFZ	+ 1%
	INCREASE ATTENDANCE RATE	+ 1%

#### HIGHLIGHTED ACTIONS, EXPENDITURES & TARGETS

3.1 - Graduate Profiles to develop soft skills responsive to local hiring needs (design career paths, close workforce gaps)	\$249,041	All Students
3.2 - Create Graduate Profiles for unduplicated students specifically	\$176,488	EL LI FY
3.3 - Continue Spanish Speaking Parent University courses	\$5,500	
3.4 - Continue Parent University course offerings	\$5,500	All Students
3.5 - Maximize District / School site communication tools	\$121,200	
3.6 - Maximize communication tools for unduplicated students	\$30,300	EL LI FY
3.7 - Increase student engagement, positive behavior, citizenship, & school climate	\$1,650	

