



Local Control and Accountability Plan

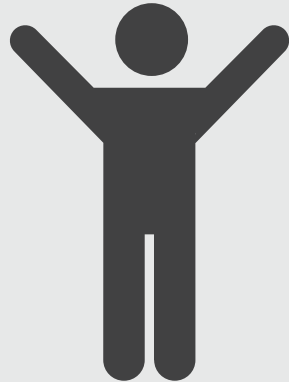
District Overview



13

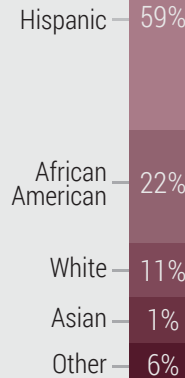
SCHOOLS

High School:	0	E/H Combo:	2
Middle:	2	Adult:	0
Elementary:	11	Ungraded:	0
Preschool:	0	Charter:	3

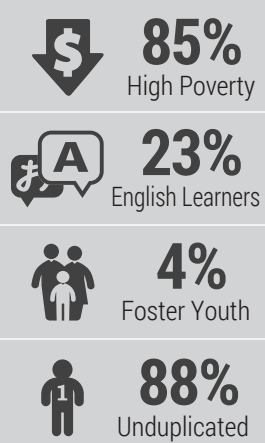


8,025
STUDENTS

STUDENT ETHNICITY

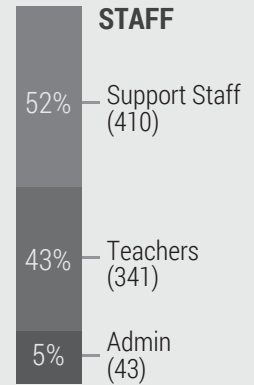


SUBGROUPS



794
EMPLOYEES

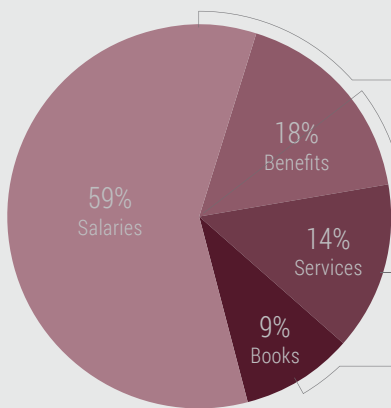
STAFF



ANNUAL REVENUE



\$64,681,799



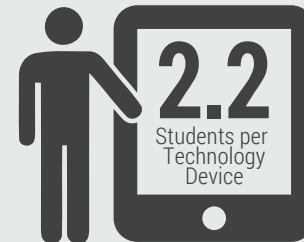
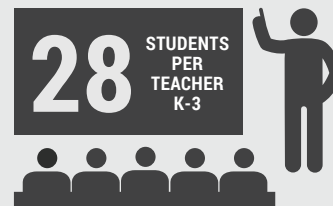
Employee Salaries: \$39,654,174 (59%)

Employee Benefits: \$11,760,181 (18%)

Services / Operations: \$9,392,160 (14%)

Books / Supplies: \$6,304,739 (9%)

Total General Fund Expenditures: \$67,120,306 (100%)



AESD
\$8,364 / Spent Per Student annually.

Nationally, California has ranked 49/50 in overall per pupil spending.*

Adelanto Elementary School District, 11824 Air Expressway, Adelanto, CA 92301-0070; Phone (760) 246-8691; Website: www.aesd.net; CDS# 3667587

About This Data: The figures above represent the most recently reported public data available from the California Department of Education, ranging from 2012 to 2014. Some values may not match exactly due to rounding, reporting delays, or anomalies. *State rankings are based on 2011 data in the most recent 2014 Education Week Quality Counts Report Card.

1. Stakeholder Engagement



400+
STAKEHOLDERS
Engaged



13
GROUPS
Involved



144
INPUT
Contributions



8
WORKSHOPS
Held



3
REVIEWS
Performed



3
BOARD MEETINGS
Convened

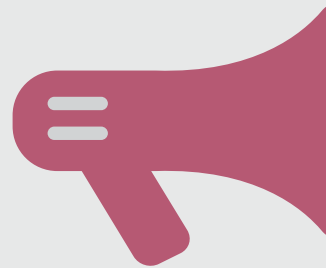
Sub-Groups include:

- Adelanto City
- Home School
- Classified Personnel
- Community
- Parents
- Certified Personnel (Teachers)
- Bargaining Units: ADTA and CSEA
- GATE
- English Learners
- AESD Students
- African American
- Latino/Hispanic
- Students with Disabilities



Checklist of Items Shared:

- District Profile Data
- State Education Priorities
- LCAP & LCFF Overview
- School Site Plans



AESD has informed, consulted, and involved school stakeholders in the process of creating the LCAP as summarized above. Communications to stakeholders includes:



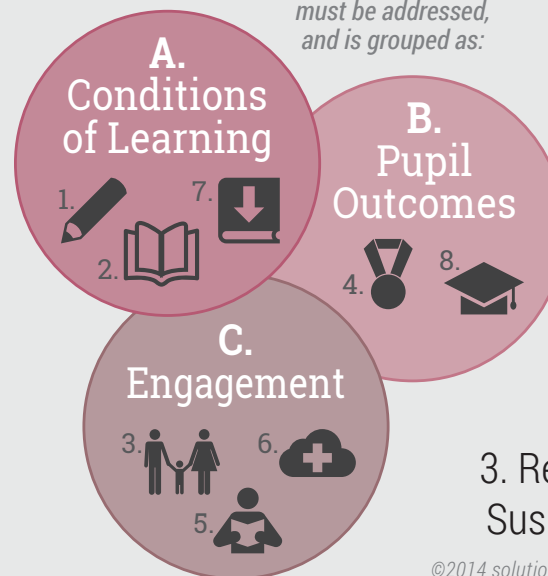
District website, telephone, email, and flyers.

State & Local Priorities



THE 8 STATE EDUCATION PRIORITIES

1. Basic Services
2. Academic Standards
3. Parent Involvement
4. Student Achievement
5. Student Engagement
6. School Climate
7. Course Access
8. Other Outcomes



Each State Priority must be addressed, and is grouped as:



Stakeholder input is aligned with California's Education Priorities...

& D. TOP LOCAL PRIORITIES

1. Ready for High School
2. Professional Development
3. Reduction in Suspensions



... and results in Annual Goals...

A. Conditions of Learning

STATE PRIORITIES SERVED



1. Basic Services



2. Academic Standards



7. Course Access

LOCAL PRIORITIES



District Strategic Plan: Pillars 1-4

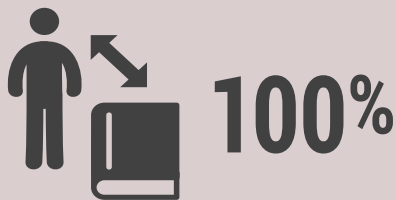
NEED - A/1.0

State and local assessment results indicate a need to continue to focus on improving student achievement.

GOAL - A/1.1

Ensure all students will receive high quality instruction aligned to Common Core State Standards in all content areas leading to High School Readiness by grade 8.

METRICS - A/1.2



STUDENT TEXTBOOK ACCESS

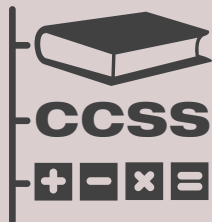


HIGHLY QUALIFIED TEACHERS

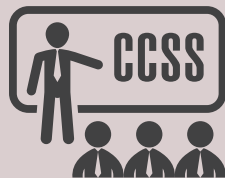


TEACHER MISASSIGNMENT

OUTCOMES - A/1.3



CCSS ALIGNED CURRICULUM



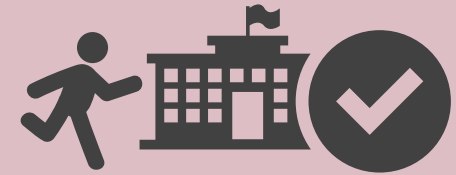
CCSS PROFESSIONAL DEVELOPMENT



STUDENT TECHNOLOGY ACCESS



MORE TEACHERS, LIBRARIANS & COUNSELORS



HIGH SCHOOL READINESS

SUBGROUPS SERVED



All Students



English Language Learners



High Poverty



Foster Youth

SCHOOLS



All - 100%

B. Pupil Outcomes

STATE PRIORITIES SERVED



4. Student Achievement



8. Other Outcomes

LOCAL PRIORITIES



District Strategic Plan: Pillars 1-4

NEED - B/1.0

State and local assessment results indicate a need to continue to focus on improving student achievement.

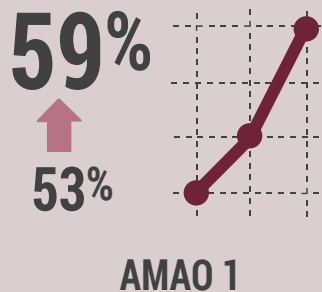
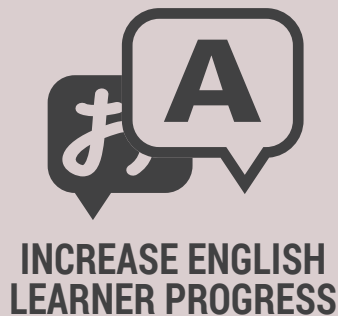
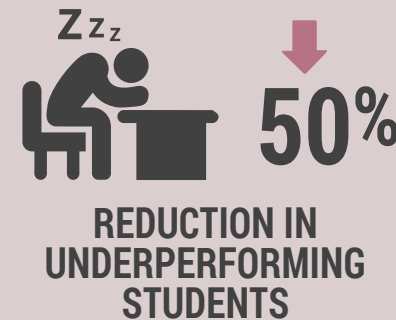
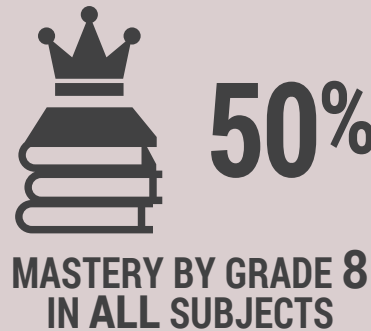
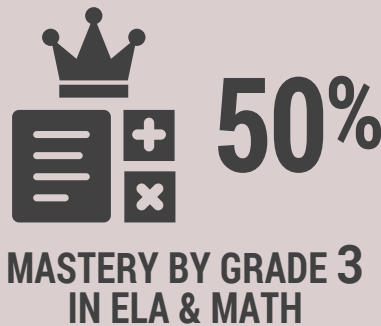
GOAL - B/1.1

Provide an instructional program which raises achievement for all students, while focusing on closing the achievement gap for our struggling students.

METRICS & OUTCOMES - B/1.2



INCREASE STUDENT ACHIEVEMENT



SUBGROUPS SERVED



All Students



English Language Learners



High Poverty



Foster Youth

SCHOOLS



All - 100%

C. Engagement

STATE PRIORITIES SERVED



3. Parent Involvement



5. Student Engagement



6. School Climate

LOCAL PRIORITIES



District Strategic Plan: Pillar 4

NEED - C/1.0

Improve communication, community involvement, student engagement, and provide a safe learning environment in order to increase student achievement & participation by all stakeholders.

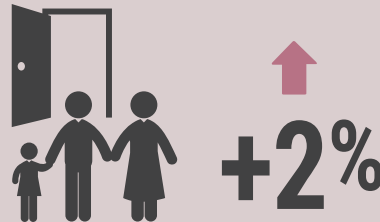
GOAL - C/1.1

Provide a safe school environment which fosters increased communication between home and school, encourages community involvement, and focuses the school climate on opportunities for student engagement.

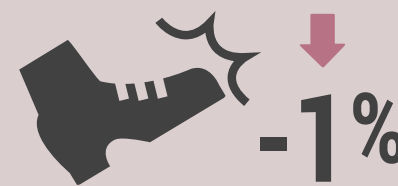
METRICS - C/1.2



INCREASE STUDENT ATTENDANCE



INCREASE PARENT PARTICIPATION

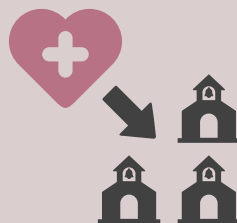


DECREASE SUSPENSION RATE

OUTCOMES - C/1.3



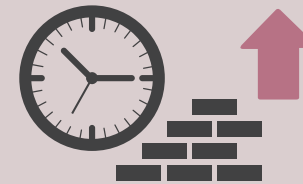
POSITIVE BEHAVIORAL INTERVENTION & SUPPORTS (PBIS)



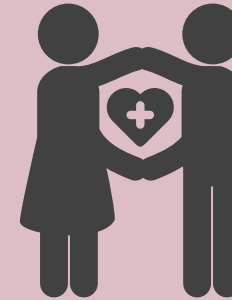
IMPLEMENT AT ALL SCHOOLS



TRAIN ALL STAFF



INCREASE PARENT COMMUNITY RESOURCE CENTER HOURS



SAFE SCHOOL ENVIRONMENT

SUBGROUPS SERVED



All Students



English Language Learners



High Poverty



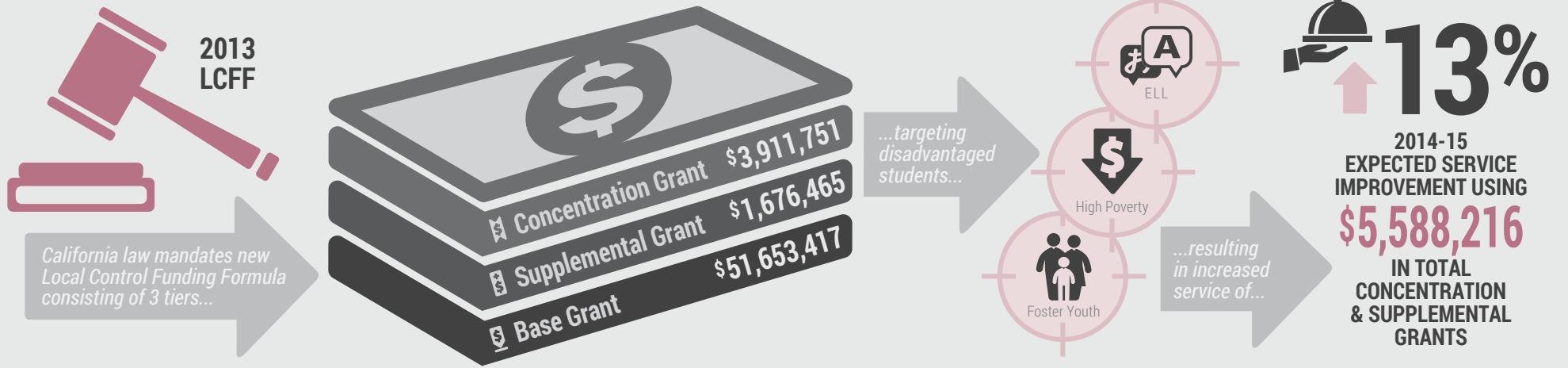
Foster Youth

SCHOOLS








All - 100%

3. Actions, Services & Expenditures

























Goal	Action / Service - Year 1	Amount	Target	Source
<p>HIGH SCHOOL READINESS</p>	<p>1. Increase the instructional day for all students:</p> <p>A. Extend the teacher work day by 1 hour</p> <p>B. Enhance instruction with written walk through feedback</p>	\$ 2,000,000	<p>All Students</p>	<p>Base-Grant Supplemental Grant Concentration Grant</p>
	<p>2. Add supplemental ELA/Math curriculum, TK – 8th Grades:</p> <p>A. Purchase K-8 ELA Instructional Materials \$ 750,000</p> <p>B. Provide 2-day ELA Professional Development \$ 180,000</p> <p>C. Purchase K-8 Math Instructional Materials \$ 750,000</p> <p>D. Provide 2-day Math Professional Development \$ 180,000</p>	<p>\$ 750,000</p> <p>\$ 180,000</p> <p>\$ 750,000</p> <p>\$ 180,000</p>		<p>Base Grant Supplemental-Grant Concentration Grant</p> <p>CCSS California Common Core State Standards Funding</p>
	<p>3. Provide CCSS Professional Development to all teaching staff:</p> <p>A. Substitute teachers for all TK-8th grade teaching staff</p>	\$ 112,000		<p>Base Grant Supplemental Grant Concentration Grant</p>
	<p>4. Increase technology use at all school sites:</p> <p>A. Add 3 technicians to assist with technology District-wide</p>	\$ 110,000		<p>Base Grant Supplemental Grant Concentration Grant</p>
	<p>5. Increase Library resources - books, Librarians & inventory system:</p> <p>A. Purchase library books, 50% literary & 50% informational</p> <p>B. Add 1 Library Media Coordinator \$ 23,500</p> <p>C. Purchase Follett-Destiny library inventory system \$ 66,420</p>	<p>\$ 190,000</p> <p>\$ 23,500</p> <p>\$ 66,420</p>		<p>Base Grant Supplemental Grant Concentration Grant</p> <p> Restricted Lottery Funds</p>

3. Actions, Services & Expenditures (Continued)

 Goal	 Action / Service - Year 1	 Amount	 Target	 Source
 <p>HIGH SCHOOL READINESS</p> 	<p>6. Provide Summer School to increase student achievement: A. Add 5 Regular Ed. & 5 Special Ed. Summer buses & B. Add 4 bus drivers to increase student achievement</p>	<p>\$ 247,439 \$ 165,000</p>	 High Poverty	 Base Grant Supplemental-Grant Concentration Grant
	<p>7. Provide Music & Art Instruction: A. Continue support of 1 Music teacher District-wide B. Add 1 Art teacher District-wide</p>	<p>\$ 68,030 \$ 68,030</p>		 Base Grant Supplemental Grant Concentration Grant
	<p>8. Provide Leadership Effectiveness Training for Administrators: A. Provide leadership coaching for school site leadership</p>	<p>\$ 100,000</p>		 Base Grant Supplemental Grant Concentration Grant
	<p>9. Provide research-based strategies to improve EL proficiency in ELA/Math: A. Purchase ELD materials for language acquisition B. Provide 2-day Professional Development on new ELD standards & Language Objective Training C. Add 6-hour ELD Support Clerk to assist Coordinators</p>	<p>\$ 32,000 \$ 112,000 \$ 50,000</p>	 English Language Learners	 Base Grant Supplemental Grant Concentration Grant Title III LEA Plan Funds
	<p>10. Provide on-going emotional support to Foster Youth Pupils: A. Add 1 Counselor at each school site</p>	<p>\$ 726,870</p>	 Foster Youth	<p>Dependent on Project Prevent Grant Funding</p>
 Goal	 Action / Service - Year 1	 Amount	 Target	 Source
 <p>INCREASE STUDENT ACHIEVEMENT</p>	<p>11. EL Progress Monitoring: A. Purchase EL Profile Cards and LAS Links Assessment instructional materials B. Provide 1 day EL Progress Monitoring Professional Development for Principal and Site EL Coordinator</p>	<p>\$ 24,000 \$ 20,000</p>	 English Language Learners	 Base Grant Supplemental Grant Concentration Grant Title III LEA Plan Funds
	<p>12. Implement multiple measures to monitor achievement in ELA/Math: A. Purchase Technology Assessments (Renaissance/STAR Early Literacy, Reading & Math)</p>	<p>\$ 132,000</p>	 High Poverty	 Base Grant Supplemental-Grant Concentration Grant

3. Actions, Services & Expenditures (Continued)

 Goal	 Action / Service - Year 1	 Amount	 Target	 Source
 INCREASE STUDENT ACHIEVEMENT	13. Provide tiered intervention supports to students in ELA/Math: A. Purchase supplemental ELA & Math materials to be utilized during tiered intervention supports (RTI)	\$ 821,000	 High Poverty	 Base Grant Supplemental Grant Concentration Grant
 Goal	 Action / Service - Year 1	 Amount	 Target	 Source
 SAFE SCHOOL ENVIRONMENT 	14. Provide sufficient staffing to ensure clean, well-maintained facilities: A. Add 1 Maintenance Worker District-wide B. Add 2 Bus Mechanics & 1 helper District-wide	\$ 69,965 \$ 165,000	 All Students	 Base Grant Supplemental Grant Concentration Grant
	15. Implement Positive Behavioral Intervention & Supports (PBIS) at all sites: A. Provide PBIS Training – Desert Mountain SELPA	\$ 50,000	 High Poverty	 Base Grant Supplemental Grant Concentration Grant Title I, II, III LEA Plan Funds
	16. Provide Equity & Diversity Training: A. Equity & Diversity Training for Site Admin, Certificated, & Classified staff (Cultural Relevance–Generation Ready)	\$ 50,000		 Base Grant Supplemental Grant Concentration Grant
	17. Support parents with info & training on curriculum & instruction: A. Provide Parent Workshops & Trainings - CCSS/SBAC, New ELD Standards, & English Classes	\$ 20,000		Title I LEA Plan Funds
	18. Increase efforts to involve all subgroups in their school community: A. Add 1 full-time Parent Liaison Coordinator to provide parent and community support B. Increase Community Resource Clerk to full-time	\$ 96,550 \$ 30,000		 Base Grant Supplemental Grant Concentration Grant

This infographic provides a high-level summary only. For more specific details, please refer to the accompanying narrative plan.



Total: \$ 7,364,489

©2014 solutions@goboinfographics.com